



*GhosT-OLED Full Kit
- front view -*

GhosT-OLED

- ▶ transparent OLED with vivid colors and high transparency
- ▶ various mechanical options for different applications
- ▶ easy transformation of full kit from table to straight mode
- ▶ touch version available
- ▶ two years warranty

EXACT solutions GhosT-OLED meets LG

EXACT solutions GhosT-OLED is powered by the latest LG T-OLED 55EW5F-A display. The innovative transparent OLED technology results in vivid colours, a wide viewing angle and of course the futuristic and eye catching transparency. The GhosT-OLED range is especially developed for the requirements and the usage on the pro AV market. Due to various product versions and a fully redesigned concept, the GhosT-OLED can easily be installed into walls or tables, used as a stand-alone solution or to create a transparent video wall and can even be made touchable. For any kind of installation there is always the right version or accessory available and if not, EXACT solutions will offer help finding the right customised solution. All GhosT-OLED products powered by LG come with a two year warranty.

MODEL DESIGNATION

GHOST55-HK:	GhosT-OLED Half Kit open frame version for easy integration
GHOST55-FK:	GhosT-OLED Full Kit for rental and stand-alone applications
GHOST55-TK:	GhosT-OLED Touch Kit, IR overlay frame for GhosT-OLED
GHOST55-FK-TC:	GhosT-OLED Full Kit with PCAP Touch functions
GHOST55-HK-TC:	GhosT-OLED Half Kit with PCAP Touch functions



*GhosT-OLED Half Kit
- back view -*



*GhosT-OLED Full Kit
- back view -*



*GhosT-OLED Full Kit equipped with Touch Kit
- front view -*

TECHNICAL SPECIFICATIONS

Panel

Screen size:	55"
Panel technology:	OLED
Aspect ratio:	16 : 9
Native resolution:	1,920 x 1,080 pixels (FHD)
Brightness (typ.):	400 nit / 150 nit (average picture level 25 % / 100 %)
Transparency (typ.):	38 %
Viewing angle:	178° x 178° (H x V)
Response time:	1 ms (G to G), 8 ms (MPRT)
Surface treatment (haze):	hard coating (2H), anti-reflection treatment of the front polarizer (reflectance typ. 14 %)
Lifetime (typ.):	30,000 hours; operation hours: 18 hours/7 days* ¹
Orientation:	landscape & portrait

Technology:

Ambient light proof:

Simultaneous touch points:

Operating system:

Programming interface:

Connection:

Touch overlay

IR diodes

yes

12

Windows 10/8/7/Vista/XP,
Mac OS X, Ubuntu/Fedora

Windows Native Touch / TUIO

USB A

PCAP Touch

PCAP-mutual capacitive type

yes

80

Windows 7/8/10, Linux, Android

HID plug & play

USB A

Connectivity

Input:

Output:

External control:

HDMI, DP, USB (2)

DP, audio

RS232C in/out, RJ45 (LAN) in/out, IR in

Power

Power supply:

Power type:

Power consumption:

100 - 240V~, 50/60Hz

built-in power

typ. 309 W*², max. 318 W*²

Environment conditions

Operation temperature:

Operation humidity:

5 °C to 35 °C

10 % to 80 %

Warranty

2 years

*¹ moving video only

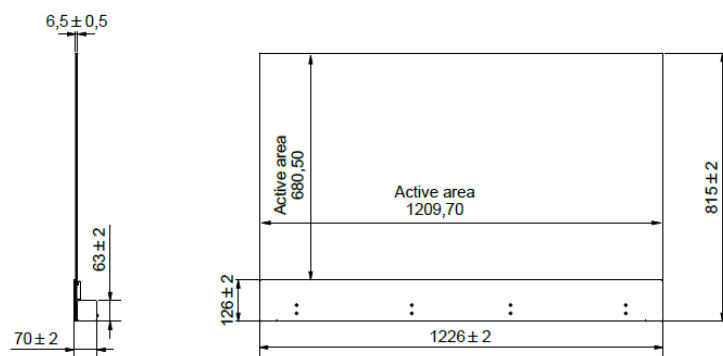
*² 8 color bar

MECHANICAL SPECIFICATIONS

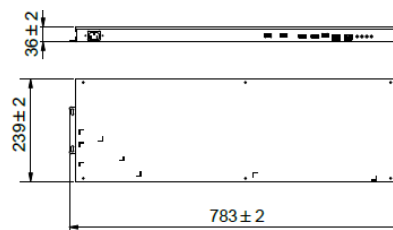
GhosT-OLED Half Kit

Bezel color:	silver (T/L/R), black or white (B)
Bezel width:	7.9 / 7.9 / 7.9 / 126 mm (T/L/R/B)
Dimensions:	head: 1,226 x 815 x 70 mm (W x H x D) signage box: 783 x 239 x 36 mm (W x H x D)
Weight:	head: 21 kg signage box: 3.4 kg

Head



Signage box

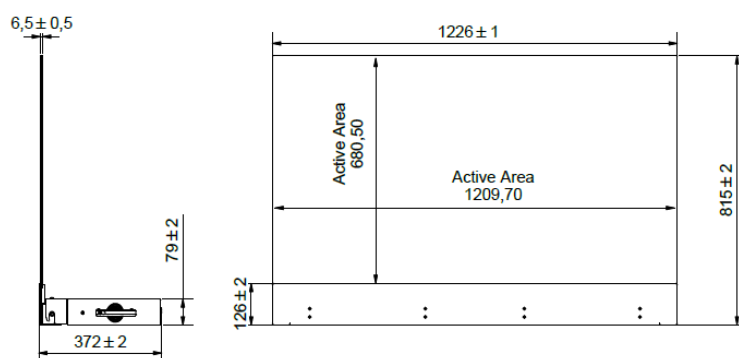


MECHANICAL SPECIFICATIONS

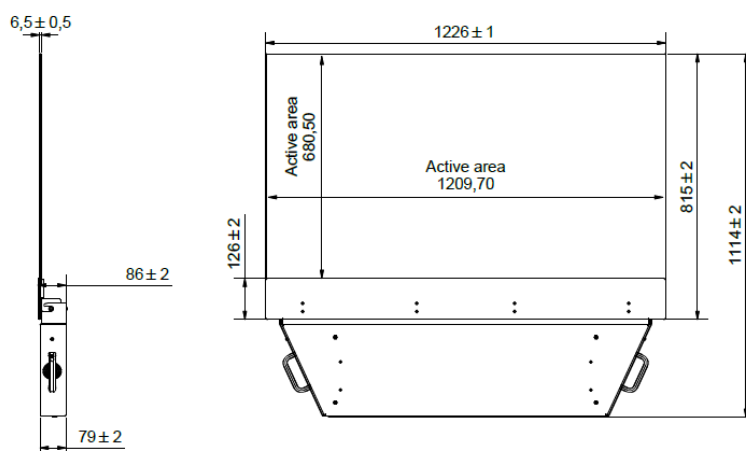
GhosT-OLED Full Kit

Bezel color:	silver (T/L/R), black or white (B)
Bezel width:	7.9 / 7.9 / 7.9 / 126 mm (T/L/R/B)
Dimensions:	table mode: 1,226 x 815 x 372 mm (W x H x D) straight mode: 1,226 x 1,114 x 86 mm (W x H x D)
Weight:	38 kg

Table mode



Straight mode

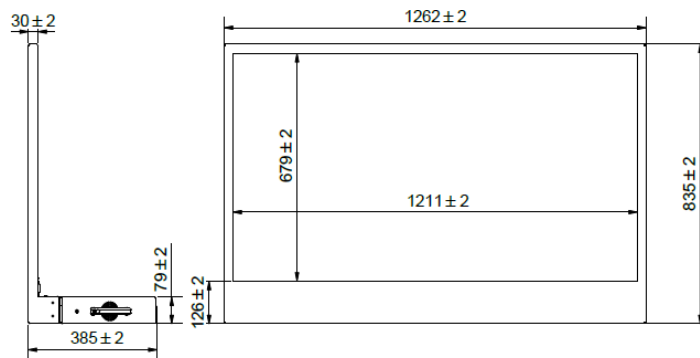


MECHANICAL SPECIFICATIONS

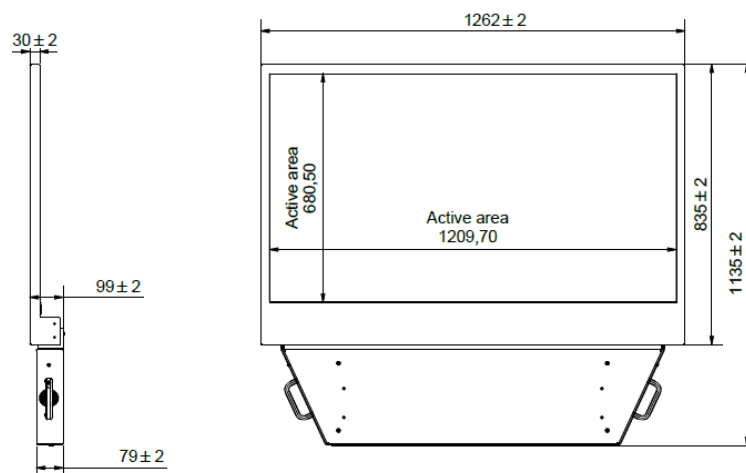
GhosT-OLED Touch Kit*³

Bezel color:	black or white (T/L/R/B)
Bezel width:	28.5 / 25.5 / 25.5 / 126 mm (T/L/R/B)
Dimensions:	table mode: 1,262 x 835 x 385 mm (W x H x D) straight mode: 1,262 x 1,135 x 99 mm (W x H x D)
Weight:	7 kg

Table mode



Straight mode



*³ Drawing shows a Touch Kit in front of a GhosT-OLED Full Kit. Both articles are sold separately!